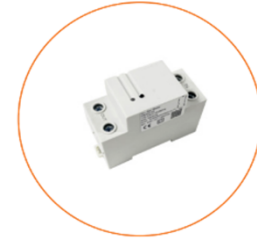


## Products

### – Energy Control & Management

CB432-W  
-TY/N

Din-rail Relay



### Description

The Din-Rail Relay CB432-W-TY/N helps you monitor the amount of electricity usage in your facility in your single-phase power system. It allows you to turn On/Off of relay and to check real-time or historical energy data via mobile App.

### Main Features

- Tuya compliant. Support automation with other Tuya device
- Single-Phase electricity system Suitable
- Wireless communication via Wi-Fi 2.4GHz
- Real-time Voltage, Current, PowerFactor, ActivePower, Frequency, measurement
- Historical data can be displayed and exported in the App
- Max.100 relay, overload protection and relay setting
- Supports Alexa and Google Assistant voice control (On/Off)

## Main Specifications

Connectivity	
Wi-Fi	<ul style="list-style-type: none"> <li>• 802.11 b/g/n @2.4GHz</li> </ul>
BLE	<ul style="list-style-type: none"> <li>• For Pairing</li> </ul>
RF Characteristics	<ul style="list-style-type: none"> <li>• Operating frequency: 2.4GHz</li> <li>• Internal antenna</li> </ul>
Physical Specifications	
Operating Voltage	<ul style="list-style-type: none"> <li>• 90~277 Vac 50/60Hz</li> </ul>
Supported Systems	<ul style="list-style-type: none"> <li>• Single-Phase</li> </ul>
Power Consumption	<ul style="list-style-type: none"> <li>• &lt;2W</li> </ul>
Voltmeters Accuracy	<ul style="list-style-type: none"> <li>• <math>\pm 1\%</math></li> </ul>
Ammeters Accuracy	<ul style="list-style-type: none"> <li>• 100A: <math>\pm 1\%</math> ( 1-100A ) , <math>\pm 2\%</math> ( 0-1A )</li> </ul>
Relay Type	<ul style="list-style-type: none"> <li>• Max.100A relay</li> </ul>
Reporting Cycle	<ul style="list-style-type: none"> <li>• Energy data: every 15 seconds</li> <li>• Relay status: immediately</li> </ul>
Operating Environment	<ul style="list-style-type: none"> <li>• Temperature: <math>-20\text{ }^{\circ}\text{C}\sim+55\text{ }^{\circ}\text{C}</math></li> <li>• Humidity: <math>\leq 90\%</math> non-condensing</li> </ul>
Mount Type	<ul style="list-style-type: none"> <li>• 35mm DIN rail mounting</li> </ul>
Dimension	<ul style="list-style-type: none"> <li>• 36 (W) x 66(D) x82(H) mm</li> </ul>
Weight	<ul style="list-style-type: none"> <li>• 186 g</li> </ul>
Certification	<ul style="list-style-type: none"> <li>• CE</li> </ul>

## Dimension

