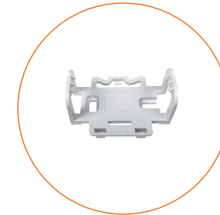
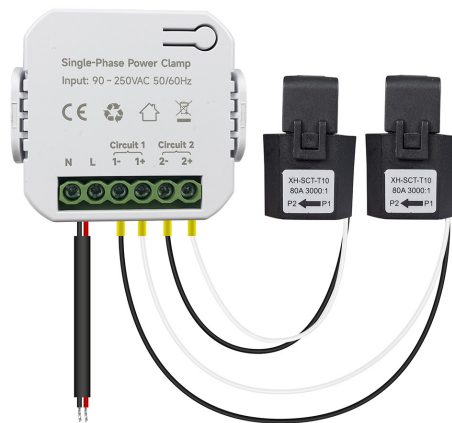


Products

– Energy Control & Management

PC311-Z-TY

Single Phase Power Clamp



Description

PC311-Z-TY Power Clamp helps you monitor the amount of electricity usage in your facility by connecting the clamp on to the power cable. It can also measure Voltage, Current, PowerFactor, ActivePower.

Main Features

- Tuya compliant
- Support automation with other Tuya device
- Single phase electricity compatible
- Measures real-time Energy Usage, Voltage, Current, PowerFactor, Active Power and frequency.
- Support Energy Production measurement
- Usage trends by day, week, month
- Suitable for both residential and commercial application
- Lightweight and easy to install
- Support two loads measurement with 2 CTs (Optional)
- Support OTA

Main Specifications

Wireless Connectivity	
ZigBee	<ul style="list-style-type: none">• 2.4GHz IEEE 802.15.4
ZigBee Profile	<ul style="list-style-type: none">• ZigBee 3.0
RF Characteristics	<ul style="list-style-type: none">• Operating frequency: 2.4GHz• Internal antenna
Physical Specifications	
Operating Voltage	<ul style="list-style-type: none">• 90~250 Vac 50/60 Hz
Calibrated Metering Accuracy	<ul style="list-style-type: none">• ≤ 100W Within ±2W• >100W Within ±2%
Reporting Cycle	<ul style="list-style-type: none">• Every one minute
Din Rail	<ul style="list-style-type: none">• 35mm
Clamp diameter	<ul style="list-style-type: none">• 80A (default): 10.6mm• 120A (optional): 16.7mm
Clamp cable length	<ul style="list-style-type: none">• 1m
Operating environment	<ul style="list-style-type: none">• Temperature: -20 °C~+55 °C• Humidity: ≤ 90% non-condensing
Certification	<ul style="list-style-type: none">• CE
Weight	<ul style="list-style-type: none">• 85g (One 80A CT)• 150g (Two 80A CT)

Dimension

