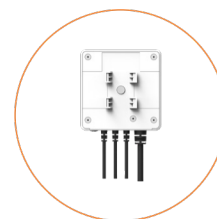
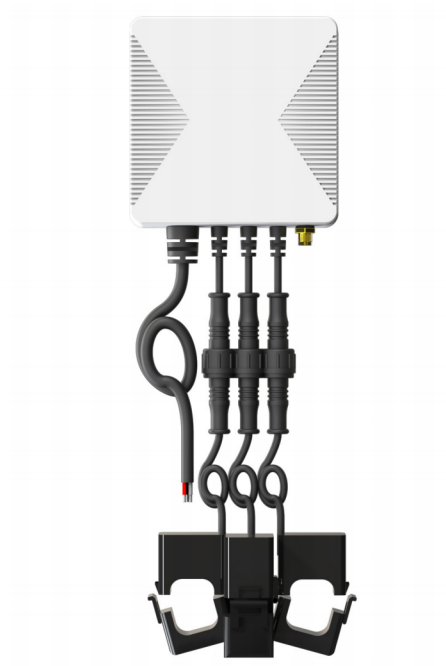


## Products

### – Energy Control & Management

PC321-W  
-TY

Single/3-phase Power Clamp



### Description

PC321-W-TY helps you monitor the amount of electricity Consumed and Produced in your three phase power system by connecting the clamp on to the power cable. It is also compatible with single phase and split phase.

### Main Features

- Tuya compliant. Support automation with other Tuya device by export and import of grid or other energy values
- Single Phase, Split Phase, 3-Phase 4-Wire 480Y/277VAC electricity system compatible
- Remotely monitor whole home Energy with three current transformers
- Real-time Voltage, Current, PowerFactor, ActivePower, Frequency, measurement
- Bidirectional measurement: Energy Usage / Solar Production
- Historical data could be displayed in Day, Week, Month and Year
- External antenna prevents signal from being shielded

## Main Specifications

Connectivity	
Wi-Fi	<ul style="list-style-type: none"> <li>• 802.11 b/g/n @2.4GHz</li> </ul>
BLE	<ul style="list-style-type: none"> <li>• For Pairing</li> </ul>
RF Characteristics	<ul style="list-style-type: none"> <li>• Operating frequency: 2.4GHz</li> <li>• External magnetic antenna</li> </ul>
Physical Specifications	
Operating Voltage (RMS for each phase)	<ul style="list-style-type: none"> <li>• 90~277 Vac 50/60Hz</li> </ul>
Supported Systems	<ul style="list-style-type: none"> <li>• Single-Phase</li> <li>• Split-Phase</li> <li>• Three-Phase up to 480Y/277VAC (No Delta/wye/Y/Star Connection)</li> </ul>
Voltmeters Accuracy	<ul style="list-style-type: none"> <li>• ±1%</li> </ul>
Ammeters Accuracy	<ul style="list-style-type: none"> <li>• 80A CT: ±1% ( 1-80A ) , ±2% ( 0-1A )</li> <li>• 120A CT: ±1% ( 2-120A ) , ±2% ( 0-2A )</li> <li>• 200A CT: ±1% ( 2-200A ) , ±2% ( 0-2A )</li> <li>• 300A CT: ±1% ( 6-300A ) , ±2% ( 2-6A ) , ±5% ( 0-2A )</li> <li>• 500A CT: ±1% ( 6-500A ) , ±2% ( 2-6A ) , ±5% ( 0-2A )</li> <li>• 750A CT: ±1% ( 6-750A ) , ±2% ( 2-6A ) , ±5% ( 0-2A )</li> </ul>
Clamp Inner Dimension	<ul style="list-style-type: none"> <li>• 80A (default): Ø10mm</li> <li>• 120A(optional): Ø16mm</li> <li>• 200A(optional): Ø20mm</li> <li>• 300A(optional): Ø24mm</li> <li>• 500A(optional): Ø36mm</li> <li>• 750A(optional): Ø51mm</li> </ul>
Reporting Cycle	<ul style="list-style-type: none"> <li>• Every 15 seconds</li> </ul>
Operating environment	<ul style="list-style-type: none"> <li>• Temperature: -20 °C~+55 °C</li> <li>• Humidity: ≤ 90% non-condensing</li> </ul>
Mount Type	<ul style="list-style-type: none"> <li>• Wall mounting (default)</li> <li>• DIN rail mounting (optional)</li> </ul>
Dimension	<ul style="list-style-type: none"> <li>• 86(W) x 37(D) x 86(H)mm</li> </ul>
Certification	<ul style="list-style-type: none"> <li>• CE</li> </ul>