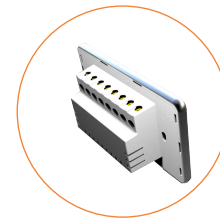
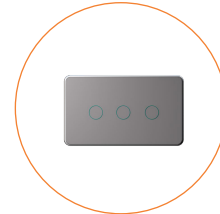
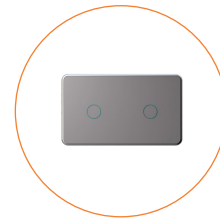


Products

– Control & Lightings

SLC627

In-Wall Touch Switch (US)



Description

The In-wall Touch Switch allows you to remotely control your lighting or even apply schedules for automatic switching from the mobile app.

Main Features

- ZigBee 3.0 compliant
- Works with any standard ZigBee Hub
- Remote on/off control using your smartphone
- Set schedules to automatically power on and off as needed
- 1/2/3 gang is available for selection

Main Specifications

Wireless Connectivity	
ZigBee	<ul style="list-style-type: none">• 2.4GHz IEEE 802.15.4
ZigBee Profile	<ul style="list-style-type: none">• ZigBee 3.0
RF Characteristics	<ul style="list-style-type: none">• Operating frequency: 2.4GHz• Range outdoor/indoor: 100m / 30m• Internal PCB Antenna
Physical Specifications	
Button	<ul style="list-style-type: none">• Touch Screen
Operating Voltage	<ul style="list-style-type: none">• 100~240 Vac 50/60 Hz
Power consumption	<ul style="list-style-type: none">• < 1 W
Max. Load Current	Each gang: <ul style="list-style-type: none">• < 700 W Resistive• < 200 W Inductive
Operating environment	<ul style="list-style-type: none">• Temperature: -20 °C ~+55 °C• Humidity: ≤ 90% non-condensing
Dimension	<ul style="list-style-type: none">• 120 x 70 x 35 mm• In-wall size: 70x 60 x 27 mm• Thickness of the front panel: 9 mm
Weight	<ul style="list-style-type: none">• 154 g
Mounting Type	<ul style="list-style-type: none">• In- wall mounting• US standard
Certificate	<ul style="list-style-type: none">• FCC, CE, ROHS