

SES441 ZigBee Wall Switch

Quick Start Guide

Safety Handling

WARNING: Failure to follow these safety notices could result in fire, electric shock, other injuries, or damage to the smart energy switch and other property. Read all the safety notices below before using the ZigBee Wall Switch.

- Avoid high humidity or extreme temperatures.
- Avoid long exposure to direct sunlight or strong ultraviolet light.
- Do not drop or expose the unit to intense vibration.
- Do not disassemble or try to repair the unit on your own.
- Do not expose the unit or its accessories to flammable liquids, gases or other explosives.

Technical Specifications

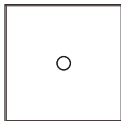
Wireless Connectivity

ZigBee	<ul style="list-style-type: none">• 2.4GHz IEEE 802.15.4
ZigBee Profile	<ul style="list-style-type: none">• ZigBee 3.0
RF Characteristics	<ul style="list-style-type: none">• Operating frequency: 2.4GHz• Range outdoor/indoor: 100m / 30m

Physical Specifications

Button	<ul style="list-style-type: none">• Touch Screen
Relay	<ul style="list-style-type: none">• Neutral and live wire double break
Operating Voltage	<ul style="list-style-type: none">• 100~240 Vac 50/60 Hz
Calibrated Metering Accuracy	<ul style="list-style-type: none">• $\leq 100W$ (Within $\pm 2W$)• $>100W$ (Within $\pm 2\%$)
Max. Load Current	<ul style="list-style-type: none">• 20 A
Operating environment	<ul style="list-style-type: none">• Temperature: $-20^{\circ}C \sim +55^{\circ}C$• Humidity: $\leq 90\%$ non-condensing
Dimensions	<ul style="list-style-type: none">• 86 (L) x 86(W) x 32(H) mm
Weight	<ul style="list-style-type: none">• 132g
Mounting Type	<ul style="list-style-type: none">• In-wall mounting

1 Welcome



The ZigBee Wall Switch SES441 is a device with wattage (W) and kilowatt hours (kWh) measurement functions. It allows you to control its On/Off status as well as to check real-time energy usage wirelessly via your mobile App. The relay is designed with double-break mode. The switch is suitable for power control of air conditioner and water heater.

This guide will provide you with an overview of the product and help you get through the initial setup.

Note: Use the smart energy switch for no more than rated current 20A.

Features:

- ZigBee 3.0
- Relay with double-break mode
- Control your home device via Mobile APP
- Energy consumption measuring
- Extend the range and strengthen ZigBee network communication
- Compatible with hot water, air conditioner's power supply

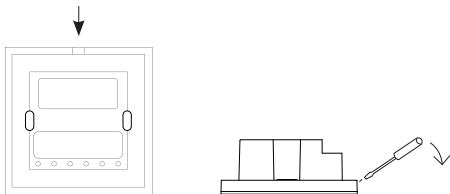
2 Installation

Important safety information!

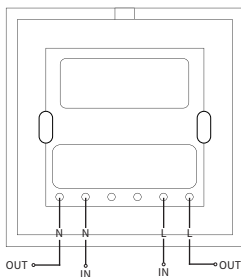
- The ZigBee Wall Switch must be installed and serviced only by qualified electrical personnel.
- Do not touch the terminals of the device during the testing.
- Turn off all power supplying this equipment before installing.
- Make sure that the power supply is off before connecting or disconnecting it to the auxiliary device.
- Always use a properly rated voltage sensing device to confirm power is off.
- Replace all devices, doors and covers before turning on power to this equipment.

Failure to follow these instructions will result in death or serious injury.

- ① Turn off all power supplying, then use a screwdriver in the direction shown below to remove the switch panel from the top.



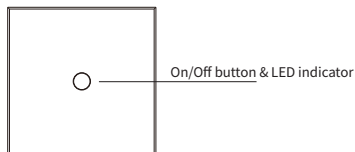
- ② Follow the wiring diagram for wiring.



Wiring Diagram

- ③ Fix the switch to the wall with screws, close the panel, and then turn on the power.

3 Get to know your device



ON/OFF button

Tap on/off button once to control the device.

LED indicator

The LED status gives the following information:

LED status	What it means
Green	The load is ON.
Red	The load is OFF.
Steady light	Device has joined a ZigBee network.
Flashing slowly(0.5s On, 2.5s Off)	Device has not joined a ZigBee network.
Flashing rapidly(0.5s On/Off)	Identify mode.

Reset:

Reset procedure allows to restore the device back to its factory settings, which means all information and user configuration (Including energy data)will be deleted.

1. Press the on/off button 3 times continuously, hold at the third time, and release until the light starts to flash.
2. Wait for a while, when the light turns red flashing, it means that the device has been reset to factory settings.

4 Configure Network

4.1 To get started, you will need:

- A Zigbee Gateway.
- A mobile phone with a mobile APP installed.

4.2 Adding to the gateway's network

1. Set your gateway to permit joining(see your gateway's manual).
2. Power on the smart switch and make sure the LED indicator is flashing slowly (If not, reset it to factory defaults).
3. After few seconds the smart switch will join the gateway automatically and the LED indicator will become steady when successfully joined.

Note: If the smart switch fails to join the gateway's network within one minute, simply reset the smart switch and retry.

5 FAQ

Q 1. Can the smart energy switch SES441 pair with SLC602 remote switch? Yes, you can refer to SLC602 guide to pair with it.

Q 2. How to clear the accumulative power consumption of the smart energy switch?

Way 1: Login the relative gateway on your app, enter the edit mode , then click the clear accumulative power consumption button (arrow icon).

Way 2: Reset the smart energy switch to factory default setting. Note: This way will lead the device lost connection of internet, you need to reconnect the gateway internet to use it.