

## **WSP406EU In-wall Socket**

---

### Quick Start Guide

# Safety Handling

**WARNING:** Failure to follow these safety notices could result in fire, electric shock, other injuries, or damage to the In-wall Socket and other property. Read all the safety notices below before using the In-wall Socket.

- Avoid high humidity or extreme temperatures.
- Avoid long exposure to direct sunlight or strong ultraviolet light.
- Do not drop or expose the unit to intense vibration.
- Do not disassemble or try to repair the unit yourself.
- Do not expose the unit or its accessories to flammable liquids, gases or other explosives.

# Technical Specifications

---

## Wireless Connectivity

---

<b>ZigBee</b>	• 2.4GHz IEEE 802.15.4
<b>ZigBee Profile</b>	• ZigBee 3.0
<b>RF Characteristics</b>	• Operating frequency: 2.4GHz

---

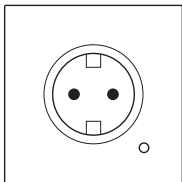
## Physical Specifications

---

<b>Operating Voltage</b>	• 95~250 Vac 50/60 Hz
<b>Max. Current (pure resistive load)</b>	• 16 A
<b>Max. Load Power</b>	• 3000W
<b>Dimensions</b>	• 85 x 85 mm • In-wall size: 48 x 48 x 35 mm
<b>Mounting Type</b>	• In- wall mounting • ZK-EU(FR/UK)

---

# 1 Welcome



The In-wall Socket allows you to remotely control your home appliances and set schedules to automate via mobile phone. It also helps users to monitor the energy consumption remotely.

This guide will provide you with an overview of the product and help you get through the initial setup and installation.

## **Features:**

- ZigBee 3.0
- Remote on/off control using your smartphone
- Set schedules to automatically power on and off as needed

## **2** Installation

### **Important safety information!**

- Make sure that the power at the circuit breaker is off before wiring.
- Neutral Wire is required. Confirm the wall box contains a Neutral Wire. If the wall box don't have a Neutral Wire, please try another location at your home or call a professional electrician to install the switch.
- The wire colors indicated in this manual are the usual colors and may differ in some houses.
- Ensure the wire conductors are securely fastened to each wire.
- Ensure the Wi-Fi signal is steady and normally working before wiring and your mobile and Zigbee gateway hub are under the same 2.4GHz WiFi network.
- If you don't have any wiring experience, please call a professional electrician.

### **Step 1**

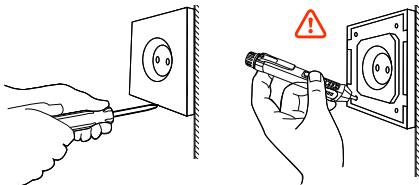
- Turn off the circuit breaker and use the electrical tester to test the power.
- Ensure the circuit breaker is off before wiring.

**Attention:**

Please disconnect the power supply before installing or removing the device for avoiding irreversible damage on the device from the electric current or some unpredictable problems such as lamp flashing.

**Step 2**

- Remove the old switch.



### Step 3

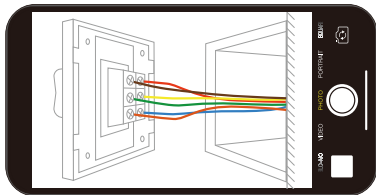
- Remove the switch and pull it away from the wall.
- Identify Line/Load Wire (Note: The color of your wire may be different from the color shown on the manual.)

#### Attention:

- Verify power is off.
- We recommend you remove the faceplate from the old switch and use an electrical tester to test all wires connected to the switch to ensure there is no voltage in the circuit.
- You may need to turn off more than one circuit breaker.

### Step 4

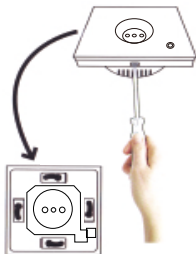
- Take pictures of the wiring.



- Follow the wiring diagram to connect the switch wires to the wires in the wall box with the wire conductors.

### Step 5

- Remove the panel with screwdriver. **(Please don't install with electricity power on)**

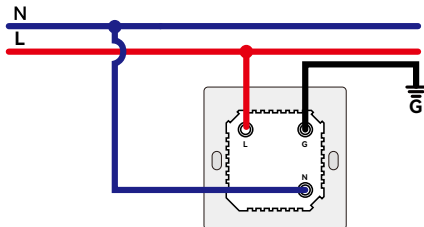


### Step 6

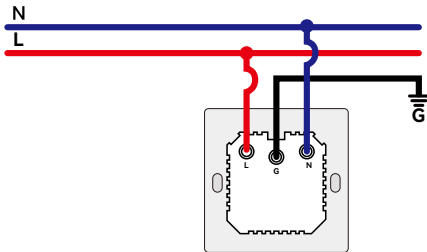
- Preparing to install wiring
  - A. Connect the live wire to the "L" terminal
  - B. Connect the neutral wire to the "N" terminal
  - C. Connect the ground wire to the "G" terminal



EU/FR

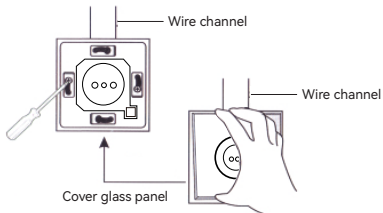


UK



## Step 7

- Put the switch into switch box in the wall
- Mount the two side screws
- Install the glass panel (install from up above)
- Finish installation



## 4 Recycling Information

All products marked with the symbol for separate collection of waste electrical and electronic equipment (WEEE Directive 2012/19/EU) must be disposed of separately from unsorted municipal waste. To protect your health and the environment, this equipment must be disposed of at designated collection points for electrical and electronic equipment designated by the government or local authorities. Correct disposal and recycling will help prevent potential negative consequences for the environment and human health. To find out where these collection points are and how they work, contact the installer or your local authority.

